

## About the Doctor of Ministry

The Doctor of Ministry (DMin) degree is an intensive program that requires 30 credit hours of coursework and a project paper agreed upon by the director.

It is a degree open to all clergy in active ministry who have the following:

- A Master of Divinity (MDV) degree from an institution accredited by the Association of Theological Schools
- An MDV GPA of 3.0 (B) or better
- Three or more years in an active ministry setting
- Strong record of leadership and previous study

## Doctor of Ministry Office

Dr. Douglas D. Tzan, Director  
(202) 885-8688  
dtzan@wesleyseminary.edu

Yasika Bigham, Liaison for the DMin, &  
Assistant to the Director  
(202) 885-8607  
ybigham@wesleyseminary.edu

# DOCTOR OF MINISTRY



## Educational Design

The Doctor of Ministry (D.Min.) degree is an intensive program that requires 30 credit hours of coursework and a project paper agreed upon by the director. Students must maintain a grade average of B - (minus) or better to remain in the program. Students will participate in courses offered primarily in one-week time-frames.

The D.Min. is structured to be completed in 3 years. However, students may take up to 6 years. Once students have completed the project seminar, they will be assigned a project reader to guide them during the writing process.

## Admissions

**Applicants for the Doctor of Ministry hold:**

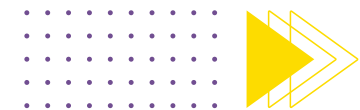
1. A Master of Divinity **or** equivalent from seminary accredited by the Association of Theological Schools with a GPA of 3.0 or above
2. Three or more years in active ministry

**Apply:**

- Online Application
- Five references
- Three essays
- College & Seminary transcripts
- \$60 application fee

**Application Deadlines:**

- October 15 for Winter term
- February 15 for Spring term



MISSION-DRIVEN | FORWARD-THINKING | GLOBALLY ENGAGED

## Military Chaplains

The core courses explore a broad range of topics related both to chaplaincy tasks and to the vocational life of the individual chaplain.

## Curating Community through the Arts

Develop the conceptual and practical skills to utilize the arts in ministry in fresh ways, which can ripple outwards to communities in need of creative leadership.

## Soul Care

Equips pastors, chaplains and clinicians with the theoretical and practical tools necessary for more effective and reflective ministry in care and counseling.

## Howard Thurman

Equipping pastors to be prophetic leaders in the church and society; and enter into diverse cultural communities with an openness to encountering, contributing to and learning from different cultural perspectives.

## Wesleyan Leadership in a Broken World: 'The Hope that is Within You'

This track draws on the resources of the Wesleyan/Methodist tradition to enhance the work of ministry leaders seeking to offer hope and healing in a world of brokenness.

## Church Leadership Excellence

Practices for leading the church toward the vision of God's reign. Clergy will receive the enhanced knowledge, skills, and motivation to lead churches to increased service, vitality, and growth.

## Global D.Min.

Equip pastors, professors, and missionaries in the US, Korea, and the world.

## Trauma, Moral Injury & Christian Life

The imperative to remember and lament the brokenness of our pasts - to move from silence to words and to work through out individuals and collective traumas toward wholness

## Spirituality & Story

Fine-tune the skills by which pastors participate in the demanding but rewarding work of weaving human stories into the fabric of God's story.

## Tuition, Room, and Board

Estimated 2024-25

- Tuition: \$750 est.+ per credit hour\*
- Fees \$72
- Books \$150 per class
- Housing \$458 per week (double)
- Meals while on campus \$250
- Miscellaneous expenses \$50
- Transportation \$300

The fees and estimated costs above are per two-week intensive term for courses taking place on the Washington DC campus and represent the maximum allowable expenses in each category.

*\*Tuition subject to change.*

## Housing

Limited dormitory-style housing is available. Request housing during the DMin Housing application window.

More Information: [wesleyseminary.edu/housing](https://wesleyseminary.edu/housing)

## Office of Admission

4500 Massachusetts Ave NW  
Washington, DC 20016  
(202) 885-8659  
[admissions@wesleyseminary.edu](mailto:admissions@wesleyseminary.edu)



## Contact us

Rev. Dr. JaNice Parks  
Director of Enrollment  
(202) 885-8687

[jparks@wesleyseminary.edu](mailto:jparks@wesleyseminary.edu)  
[wesleyseminary.edu/doctorofministry](https://wesleyseminary.edu/doctorofministry)

