

Wesley's CAMPUS HOUSING



OFFICE OF
RESIDENCE LIFE

2019-2020

WESLEY THEOLOGICAL SEMINARY

Growing Deeper, Reaching Higher

HOME

Types of Housing:
Single Permanent Resident
Family Permanent Resident
Intentional Living
Commuter Housing

Students should determine their eligibility, review their options, and select the type of housing which best fits their needs

01

Single Students (without family)
New Residence Hall (NRH)
Carroll Residence Hall (Efficiency)
Birch Intentional Living Community
@ Wesley Downtown

02

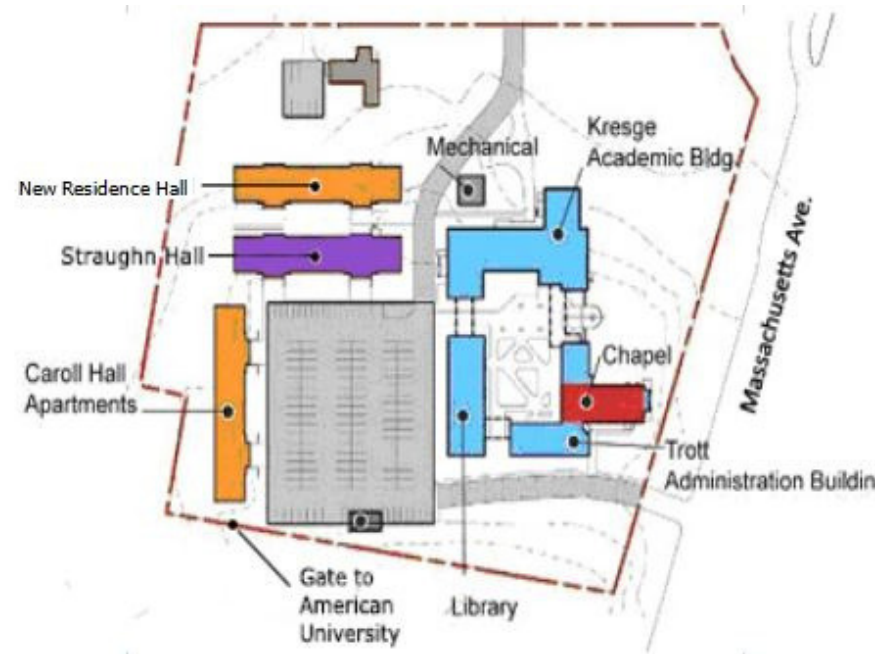
Students with Families
Carroll Residence Hall
(with or without children)
Birch Intentional Living Community
@ Wesley Downtown (apartment unit only)

03

Commuter Housing
one to three nights per week in
New Residence Hall (NRH)



AFTER APRIL 1 - ONLINE APPLICATION
JUNE 1 - INTERNATIONAL STUDENT PRIORITY DEADLINE



MONICA SHARP

Office of Residence Life

EMAIL

residencelife@wesleyseminary.edu

CALL

(202) 885-8612





Family Friendly

CARROLL HALL

APARTMENTS

PRICE

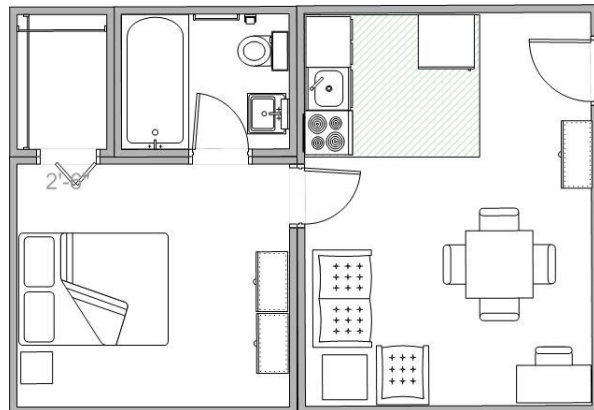
One Room Efficiency	\$1,034/month
One Bedroom	\$1,247/month
Two Bedrooms	\$1,655/month
Three Bedrooms	\$1,952/month

FURNISHED APARTMENTS |

Apartments are very private, carpeted and furnished with private bathrooms and kitchens.

LAUNDRY FACILITIES |

Cash/card operated laundry facilities in Carroll



Welcome to

BIRCH INTENTIONAL LIVING COMMUNITY

900 Massachusetts Ave NW, Washington DC

DORM

PRICE

Double Occupancy	\$769/month
Single Occupancy	\$944/month

APARTMENT

PRICE

Efficiency	\$1,406/month
Small Apartment	\$1,587/month
Large Apartment	\$1,793/month

Intentional Living Space

Maximum of 18 residents, BIC offers a large community lounge, furnished rooms, kitchen, study room and laundry room.

Members of the BIC write a covenant together and hold each other accountable as they live in their studies in ministry in the heart of DC.



EST. 2013

NRH

New Residence Hall

PERMANENT ROOMS

Double
Single
Meal Plan

PRICE

\$746/month
\$916/month
\$1,195/sem

COMMUTER DOUBLE RATE

1 Night Stay
2 Nights Stay
3 Nights Stay
Extra Night

PRICE

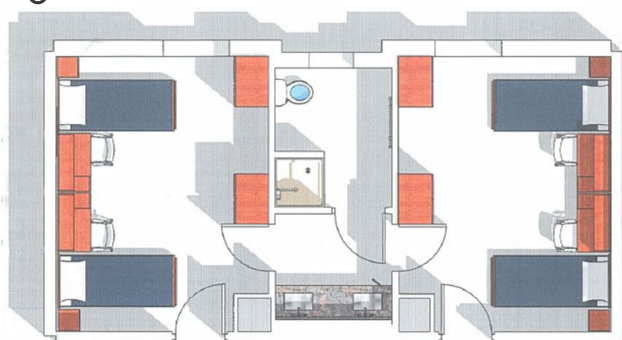
\$572/sem
\$1,142/sem
\$1,716/sem
\$41/night

COMMUTER SINGLE RATE

1 Night Stay
2 Nights Stay
3 Nights Stay
Extra Night

PRICE

\$845/sem
\$1,690/sem
\$2,534/sem
\$62/night



NEW RESIDENCE HALL



PERMANENT RESIDENTS | REQUIREMENTS

Permanent residents are required to purchase a meal plan, which offers meal service in the seminary Refectory Monday through Thursdays, lunch and dinner. Also required are a minimum of 7 credit hours for NRH housing and a minimum of 4 credit hours for NRH summer residency.

ROOMS | SINGLE/DOUBLE

Rooms are furnished with: extra long twin bed, headboard, drawer, desk with hutch, rolling task chair, night table with drawer and shelf, and armoire. Rooms are connected in suites, offering semi-private bathrooms for students.

COMMUNITY AREA | LOUNGE, KITCHEN, LAUNDRY

NRH provides a lounge and kitchen on each floor. There are other study/worship spaces for resident use. Two card operated laundry facilities in NRH (Lower level, and 3rd floor).

